

# 614NGH ebmpapst 24V 110mA 2.5W 60x60x25mm DC Axial Fan

**SKU:** 614NGH

**Price:** \$35.67

**Categories:** Fans

**Tags:** ebmpapst

**Product Link:**

<https://www.electspares.com/product/614ngh-ebmpapst-24v-110ma-2-5w-60x60x25mm-dc-axial-fan/>

---

## Product Description

---

The ebmpapst 614NGH is a high-performance 24 VDC DC Axial Fan with dimensions of 60 x 60 x 25 mm, specifically engineered for demanding thermal management in industrial frequency converters and electrical control cabinets. Driven by a robust brushless DC motor with integrated electronic protection, this unit provides a precise power consumption of 2.6 W and a nominal current draw of 110 mA at 24 VDC. Operating at a rated speed of 5100 RPM, it delivers a powerful airflow of 46 m<sup>3</sup>/h for efficient heat extraction. Constructed with a durable glass-fiber reinforced PBT plastic housing and a 5-blade glass-fiber reinforced PA plastic impeller featuring the proprietary Sintec sleeve bearing system, this 66 g unit provides a dependable air-moving solution with a noise level of 35 dB(A) and IP20 protection, ensuring maximum cooling performance and long-term mechanical stability for high-power inverters, variable frequency drives (VFD), and integrated electrical switchgear systems at the end.

614NGH Fan Parameters

Model Number: 614NGH

Manufacturer: ebmpapst

Type: DC Axial Fan

Impeller Size: 60 mm

Dimensions: 60.0 x 60.0 x 25.0 mm

Weight: 66 g

Bearing Type: Sintec sleeve bearing

Nominal Voltage: 24 VDC

Voltage Range: 18.0 - 26.0 VDC

Nominal Power Consumption: 2.6 W

Nominal Current Draw: 110 mA

Rated Speed: 5100 RPM  
Max. Air Flow: 62.23 CFM (105.7 m<sup>3</sup>/h / 1.76 m<sup>3</sup>/min)  
Max. Static Pressure: 9.81 mmH<sub>2</sub>O (96.24 Pa / 0.39 inH<sub>2</sub>O)  
Working Air Flow: 46 m<sup>3</sup>/h  
Static Pressure Increase: 48 Pa  
Motor Protection: Locked-rotor and reverse polarity protection  
Insulation Class: Class E  
Electrical Hookup: 2 lead wires (Red +, Blue -)  
Number of Blades: 5  
Direction of Rotation: Clockwise (viewed toward rotor)  
Airflow Direction: Exhaust over struts (Direction "V")  
Housing Material: Glass-fiber reinforced PBT plastic  
Impeller Material: Glass-fiber reinforced PA plastic  
Operation Mode: S1 (Continuous operation)  
Sound Power Level: 5.1 Bel  
Sound Pressure Level: 35 dB(A)  
Service Life (L10): 70,000 h (at 40 °C) / 35,000 h (at 70 °C)  
Operating Temperature: -20 - +70 °C  
Storage Temperature: -40 - +85 °C  
Degree of Protection: IP20  
Standard Compliance: EN 60335-1; CE  
Approval Agency: VDE; CSA; UL; CCC

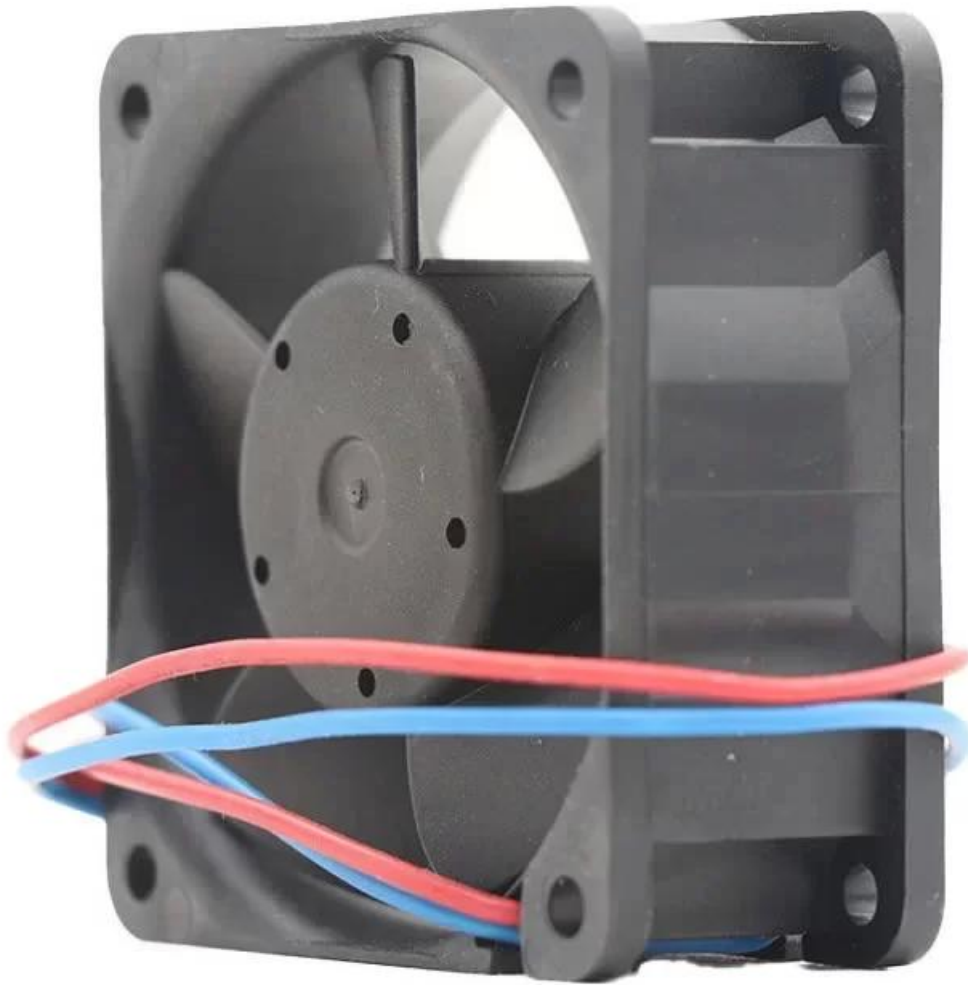
#### Application

The ebmpapst 614NGH DC fan is primarily utilized in industrial frequency converters, power inverters, and electrical control cabinet heat dissipation systems for efficient exhaust and cooling.

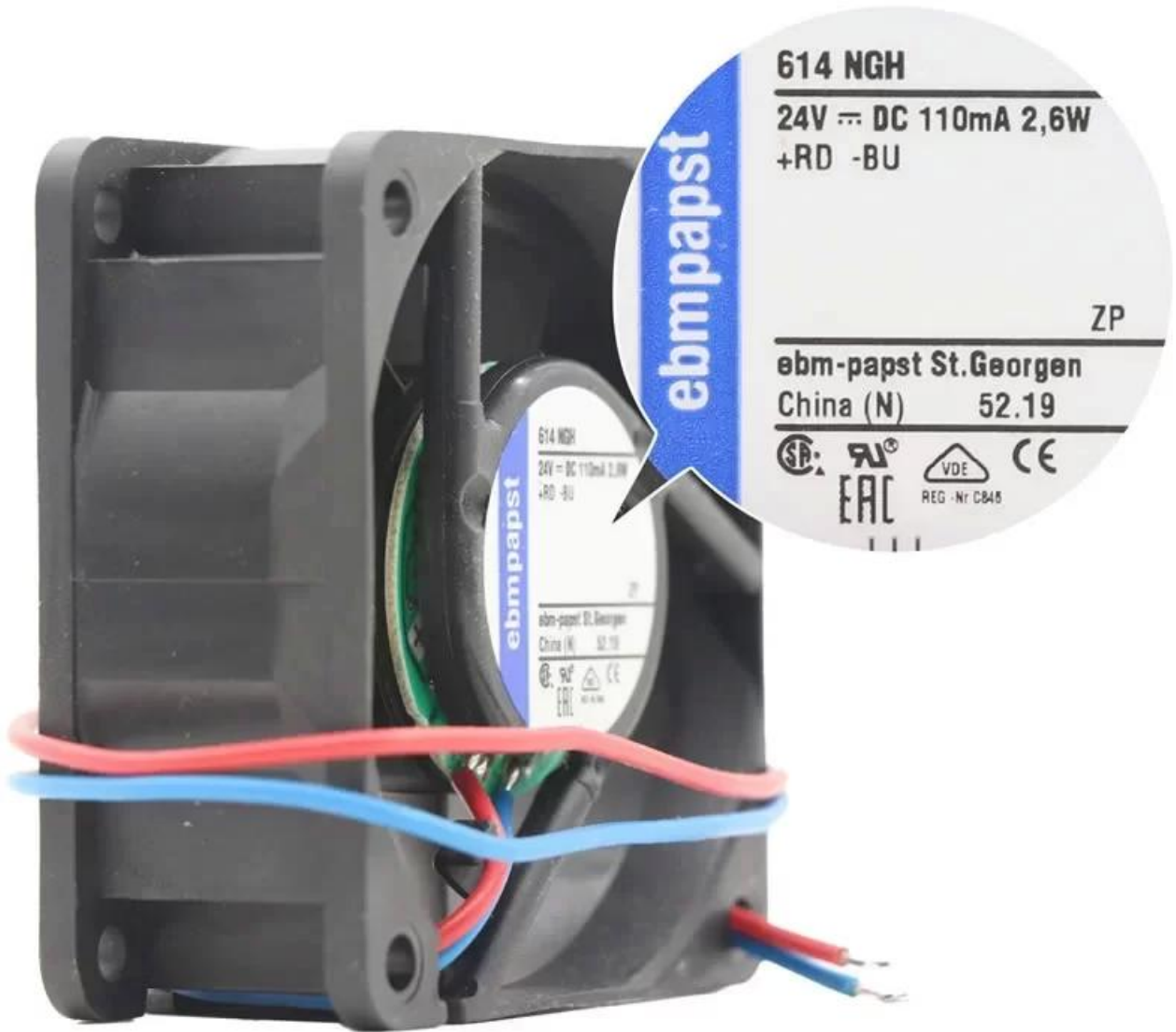
## **Product Images**

---









Scan for product details:

