

C-S01C 6023 Canon projector Toshiba 12V blower fan

SKU: C-S01C

Price: \$13.65

Categories: Fans

Tags: Toshiba

Product Link:

<https://www.electspares.com/product/c-s01c-6023-canon-projector-toshiba-12v-blower-fan/>

Product Description

The C-S01C is a DC Cooling Fan commonly utilized for thermal management within projectors, including models from brands like Toshiba. Operating on 12V DC power, it draws 0.20A of current, resulting in a 2.4W power consumption. With dimensions of 60mm x 60mm x 23mm, this fan is designed to fit the specific space requirements of projector systems. Its 3-wire connector provides standard power and often includes a signal for speed monitoring. The C-S01C plays a crucial role in maintaining optimal operating temperatures for sensitive internal components in projectors, ensuring stable performance and longevity.

C-S01C 6023 Canon projector cooling fan Toshiba 12V small blower 3-wire centrifugal fan

Manufacturer: Toshiba

Model Number: C-S01C

Type: DC Cooling Fan

Rated Voltage: 12V DC

Rated Current: 0.20A

Rated Power: 2.4W

Dimensions: 60mm x 60mm x 23mm (Length x Width x Thickness)

Connector: 3-Wire

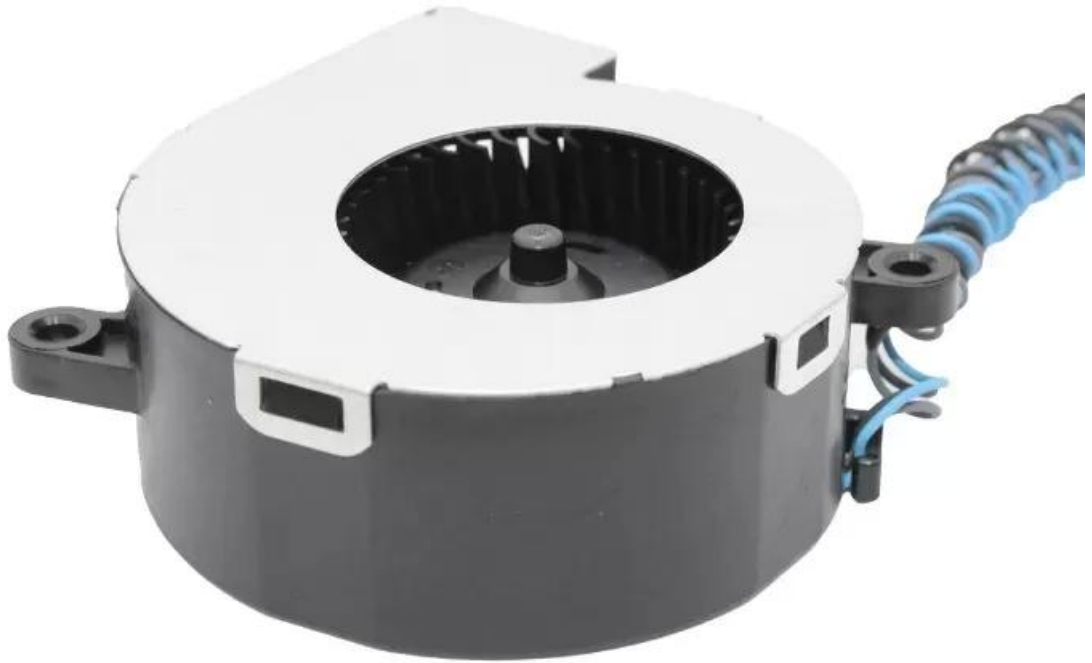
Applications: Primarily used as a cooling fan in various projector models.

Product Images









Scan for product details:

