

M4Q045-EF03-04 ebmpapst 230V 1300RPM 110W Square Motor

SKU: M4Q045-EF03-04

Price: \$49.99

Categories: Fans

Tags: ebmpapst

Product Link:

<https://www.electspares.com/product/m4q045-ef03-04-ebmpapst-230v-1300rpm-110w-square-motor/>

Product Description

The ebmpapst M4Q045-EF03-04 is a high-performance 230 V industrial shaded-pole motor with dimensions of 83 x 83 mm, meticulously engineered for critical thermal management in ventilation and refrigeration environments. This unit integrates a high-torque AC motor with a 45 mm motor size optimized for a 110.0 W power envelope, driving compatible impellers to a peak velocity of 1550 RPM. Designed to operate reliably in continuous duty cycles, it delivers consistent rotational force for air displacement through large evaporator coils and condenser units. The mechanical foundation consists of a maintenance-free sleeve bearing system and a die-cast aluminum housing, providing exceptional longevity in high-moisture conditions. Featuring a robust electrical connection and a versatile multi-mount design, this motor is an essential component for commercial refrigerated display cases, cold rooms, and industrial ventilation systems where constant speed and heavy-duty durability are mandatory.

M4Q045-EF03-04 Fan Parameters

Manufacturer: ebmpapst

Model Number: M4Q045-EF03-04

Motor Model: M4Q045-EF

Series: Q-Motor

Type: AC Shaded-Pole Motor (1~ Phase)

Bearing Type: Sleeve Bearing

Nominal Voltage: 230 VAC

Frequency: 50 / 60 Hz

Voltage Range: 200.0 - 240.0 VAC

Dimensions: 83 x 83 mm

Motor Size: 45 mm

Weight: 2.2 kg

[Electrical Data]

Input Power (50/60Hz): 110.0 / 100.0 W

Output Power (50/60Hz): 34.0 / 34.0 W

Nominal Current: 0.72 A

Nominal Speed (50/60Hz): 1300 / 1550 RPM

Motor Design: Shaded-pole motor, 4-pole

Motor Protection: Impedance protection

Insulation Class: Class B

Insulation Resistance: >10M ohm at 500 VDC

Dielectric Strength: 1500 VAC for 1 minute

Termination: Multi-core cable (with grounding)

[Performance & Construction]

Max. Air Flow: Performance depends on attached impeller size

Max. Static Pressure: Performance depends on attached impeller size

Direction of Rotation: Counter-clockwise (viewed toward shaft end)

Housing Material: Die-cast aluminum

Shaft Material: Steel, nickel-plated

Degree of Protection: IP42

[Reliability & Safety Standards]

Min. Ambient Temperature: -30 °C

Max. Ambient Temperature: 40 °C

Operating Mode: S1 (Continuous operation)

Mounting Position: Shaft horizontal or rotor on bottom

Standard Compliance: EN 60335-1, CE

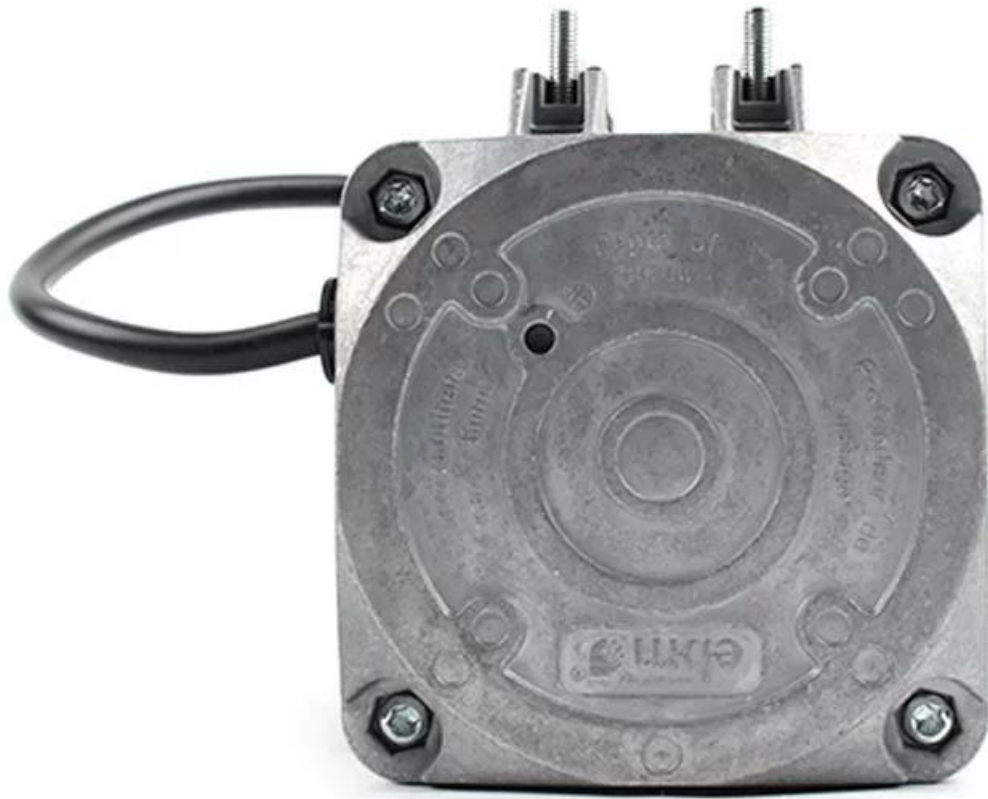
Approval Agency: VDE, CE, UL, CSA

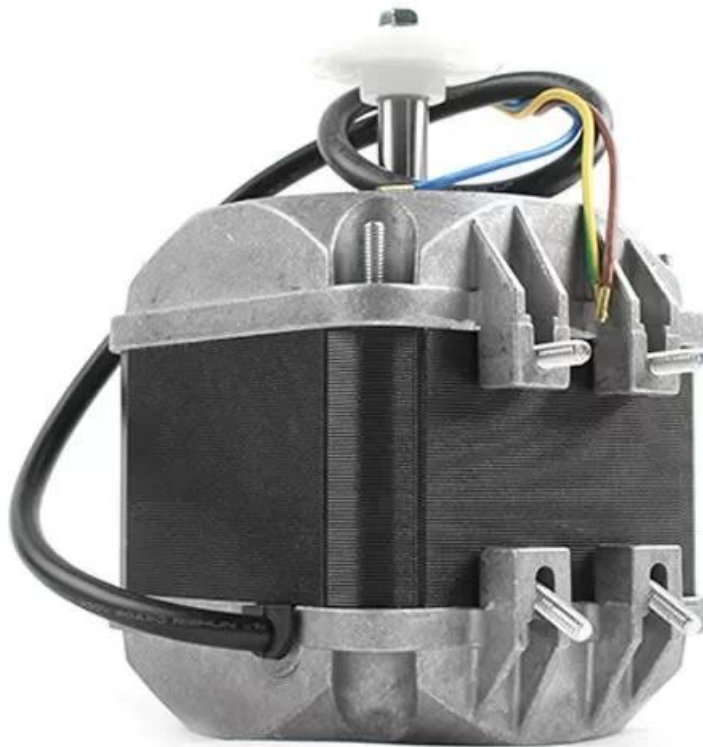
Application

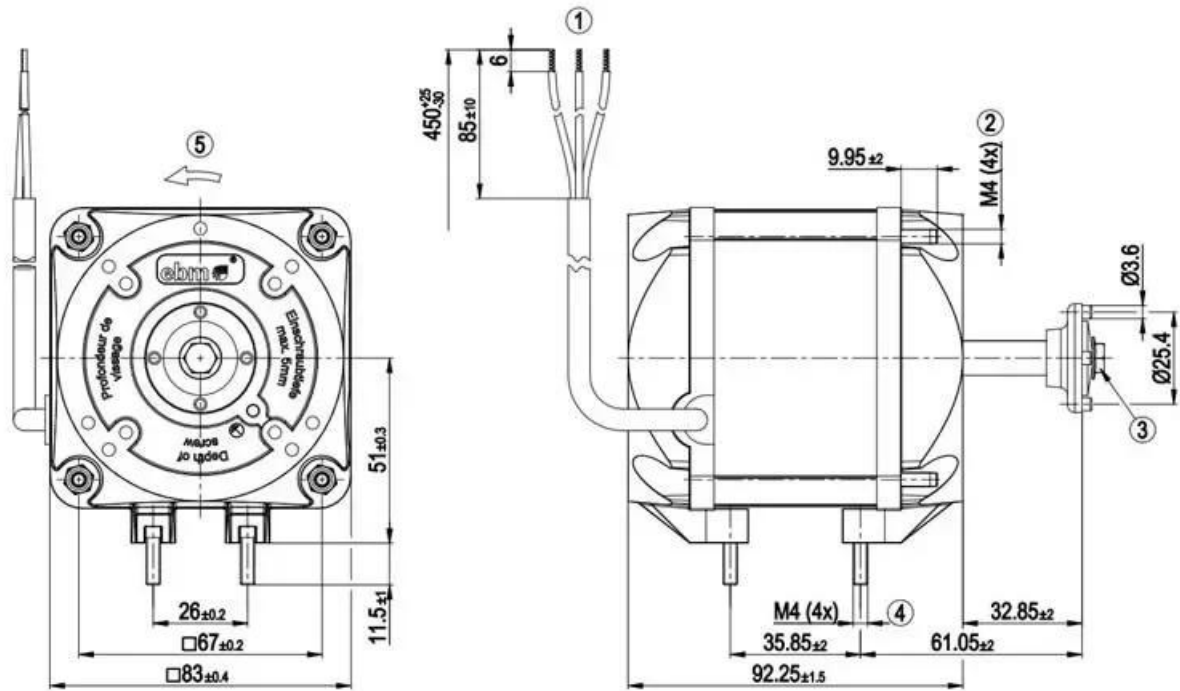
The ebmpapst M4Q045-EF03-04 axial fan motor is used in commercial refrigerated display cases, walk-in cold room evaporators, small condenser units, laboratory exhaust hoods, and household ventilation systems.

Product Images









All dimensions in mm.

| | |
|---|---|
| 1 | Cable PVC AWG20, 3x crimped splices |
| 2 | Tightening torque for nut for fastening fan housing or guard grill 2.3 Nm |
| 3 | Tightening torque for screw for fastening fan impeller 1.4 Nm |
| 4 | Tightening torque for nut for fastening mounting bracket 2.3 Nm |
| 5 | Direction of rotation counterclockwise, viewed toward shaft end |

Scan for product details:

