

PFR0612XHE-01 Delta 12V frequency conversion cooling fan

SKU: PFR0612XHE-01

Price: \$9.99

Categories: Fans

Tags: Delta

Product Link:

<https://www.electspares.com/product/pfr0612xhe-01-delta-12v-frequency-conversion-cooling-fan/>

Product Description

The Delta PFR0612XHE-01 is an exceptionally powerful 60x60x38mm DC axial fan from Delta Electronics, engineered for extreme cooling demands. Operating on 12VDC, it consumes a very high amount of power, ranging from 39.6W to 60W, with a current draw of 3.30A to 5.0A. This fan features robust dual high-precision ball bearings for extended reliability and a long expected life of 70,000 hours. It delivers an immense airflow, typically around 76.2 CFM but can exceed 100 CFM on some variants, at incredibly high rotational speeds from 12000 RPM to 16500 RPM. This performance comes with a high noise level, usually around 67.7 dB. Its 4-wire termination allows for PWM speed control and provides a speed sensor for monitoring, alongside locked rotor protection. The PFR0612XHE-01 is specifically designed for critical applications such as server cooling, high-density computing chassis, and demanding industrial equipment where maximum heat dissipation in a compact space is paramount, often accepting higher noise levels for superior thermal performance.

PFR0612XHE-01 Original Delta 6038 12V frequency conversion server cooling fan 5A 60x60x38
Model Number: PFR0612XHE-01

Manufacturer: Delta Electronics

Series: PFR Series

Fan Type: DC Brushless Axial Fan

Dimensions L x H x W: 60 mm x 60 mm x 38 mm

Rated Voltage: 12 VDC

Operating Voltage Range: 7 VDC to 13.2 VDC

Rated Current: 3.30 A or 5.0 A (Note: Current can vary significantly depending on the exact sub-variant; 5.0A is for extremely high-performance versions.)

Input Power: 39.6 W or 60 W (corresponding to current rating)

Wiring: 4 Wire Leads (Typically includes PWM control and a speed sensor/tachometer)

Bearing Type: Dual High-Precision Ball Bearings

Rotational Speed RPM: 12000 RPM to 16500 RPM (This can vary depending on the current rating/specific variant)

Maximum Airflow: 76.2 CFM to over 100 CFM

Maximum Static Pressure: 3.185 in H₂O or 793.4 Pa

Noise Level: 67.7 dB to 70 dB

Frame Material: Plastic

Impeller Blade Material: Plastic

Features: PWM Control, Speed Sensor/Tachometer, Locked Rotor Protection

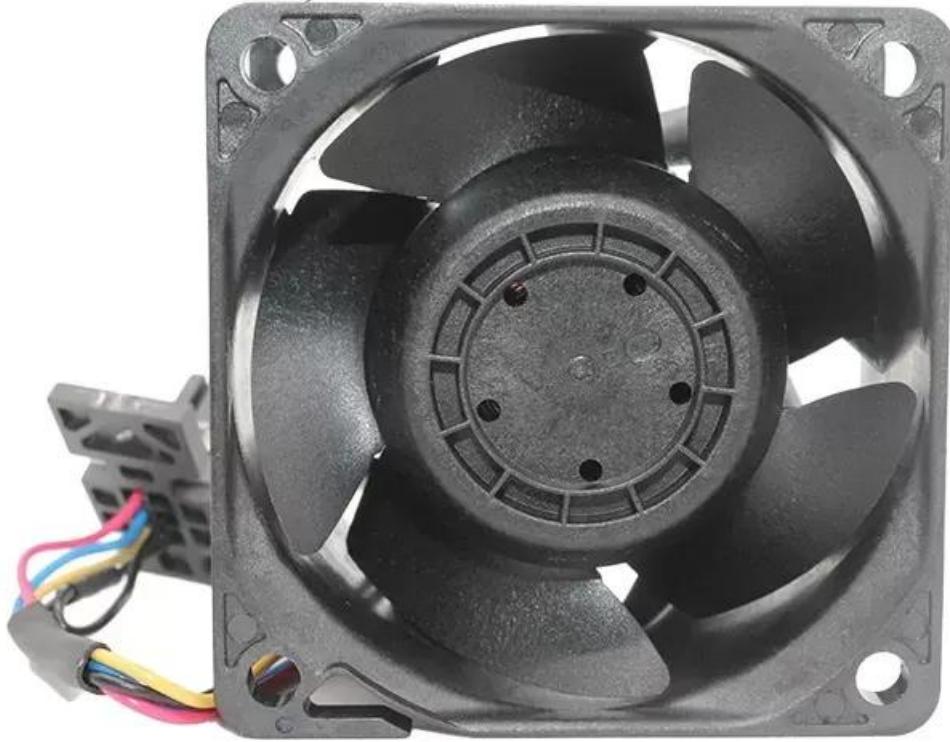
Operating Temperature Range: -10°C to +70°C

Expected Life L10: 70,000 Hours at 40°C

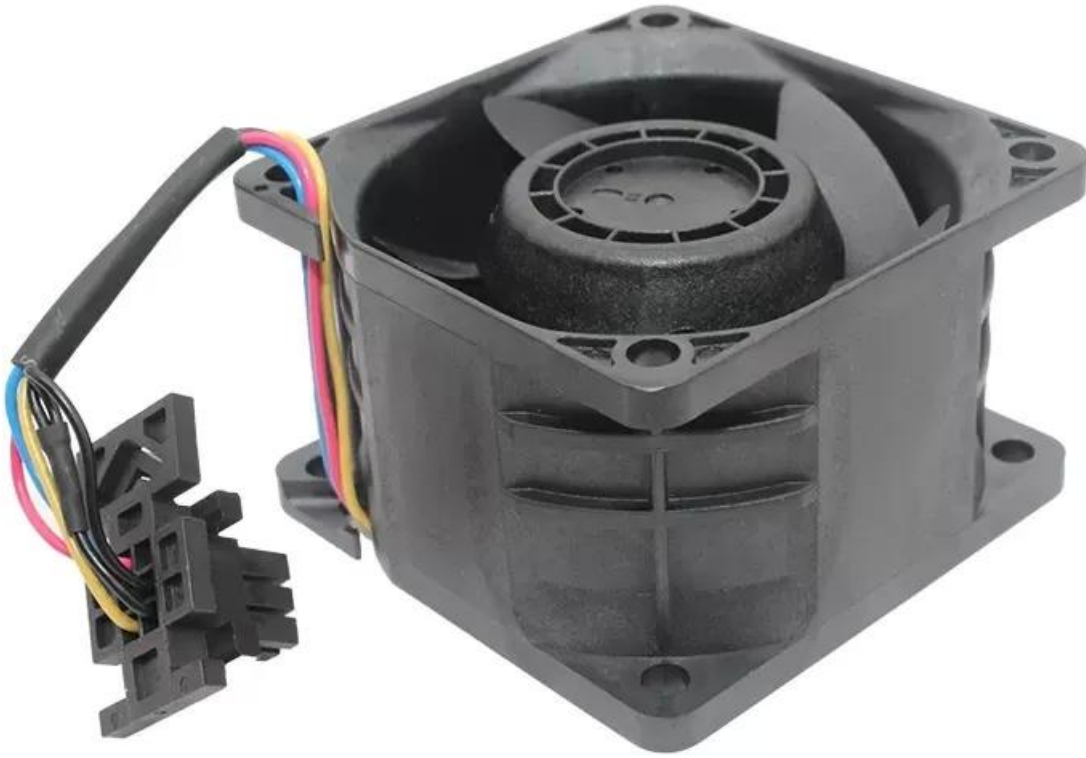
Mass: Approximately 130 g

Product Images









Scan for product details:

