

RH31M-6ID.BD.2R ZIEHL-ABEGG 200-277V EC Centrifugal Fan

SKU: RH31M-6ID.BD.2R

Price: \$2,443.57

Categories: Fans

Tags: Ziehl-Abegg

Product Link:

<https://www.electspares.com/product/rh31m-6id-bd-2r-ziehl-abegg-200-277v-ec-centrifugal-fan/>

Product Description

The ZIEHL-ABEGG RH31M-6ID.BD.2R is a state-of-the-art 200-277 V 1-Phase EC Centrifugal Fan with a 310 mm impeller diameter, featuring integrated ECblue motor technology for maximum energy efficiency and stepless speed control. Driven by a high-torque 6-pole equivalent electronic commutated motor with THCL 155 (Class F) insulation, this unit features a wide voltage input, delivering a precise Max. Power Consumption of 0.38 kW at a high rated speed of 2350 RPM. Engineered for high-demand air handling units and precision cooling, it achieves a maximum air flow of 3450.0 m³/h (2030.6 CFM) with a static efficiency superior to conventional AC drives. Constructed with a high-strength composite impeller and a 4.00 kg lightweight assembly, this German-engineered unit provides IP55 protection and integrated motor monitoring for mission-critical industrial applications at the end.

RH31M-6ID.BD.2R Fan Parameters

Model Number: RH31M-6ID.BD.2R

Manufacturer: ZIEHL-ABEGG

Type: EC Centrifugal Fan

Series: RH Series (M-series ECblue)

Impeller Size: 310.0 mm

Weight: 4.00 kg

Bearing Type: Ball bearing with long-time lubrication

Nominal Voltage: 1~ 200 - 277 VAC

Phase: 1~

Frequency: 50/60 Hz

Max. Power Consumption (P1): 0.38 kW

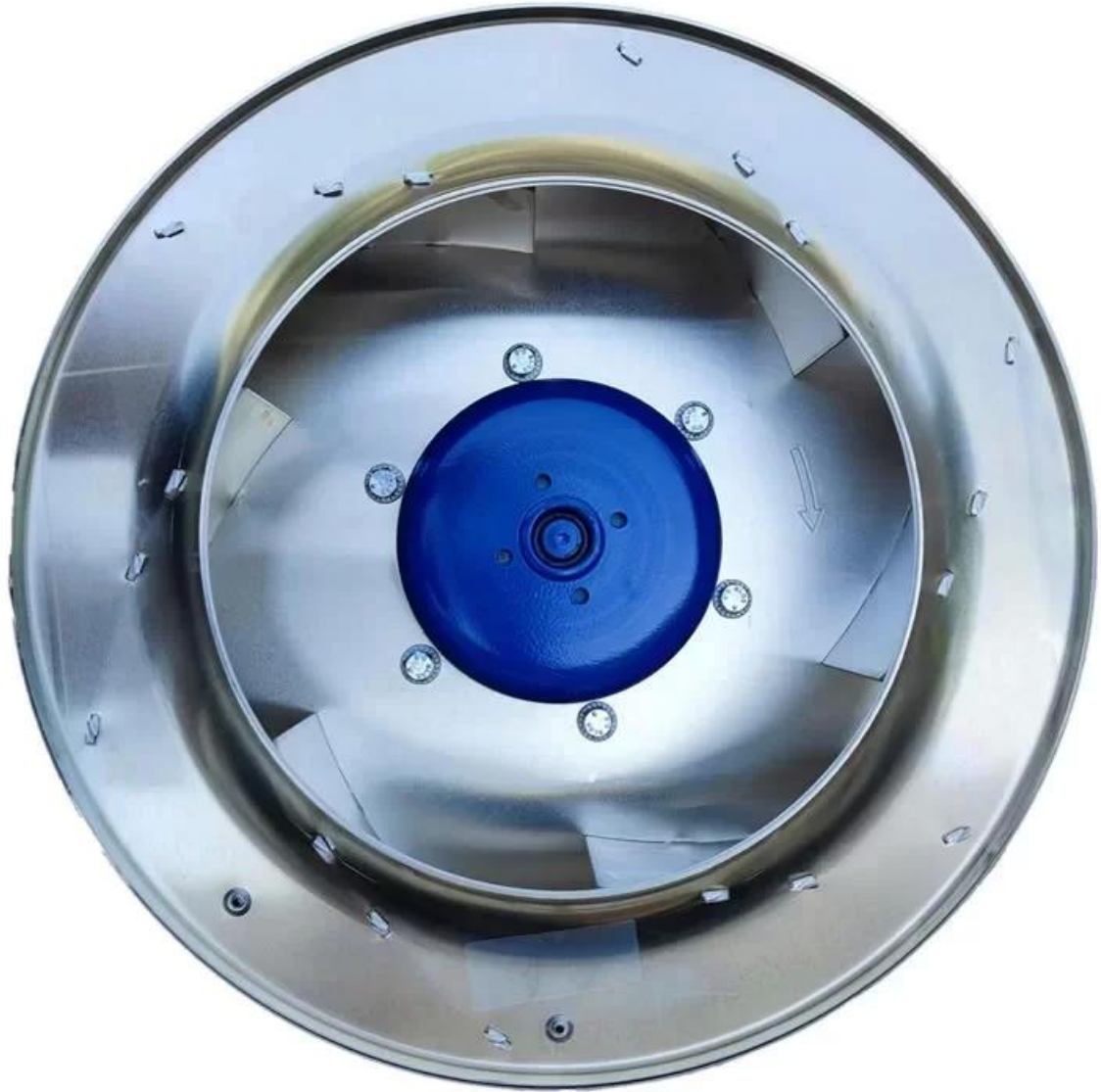
Rated Current: 1.9 A (at 200V) / 1.35 A (at 277V)

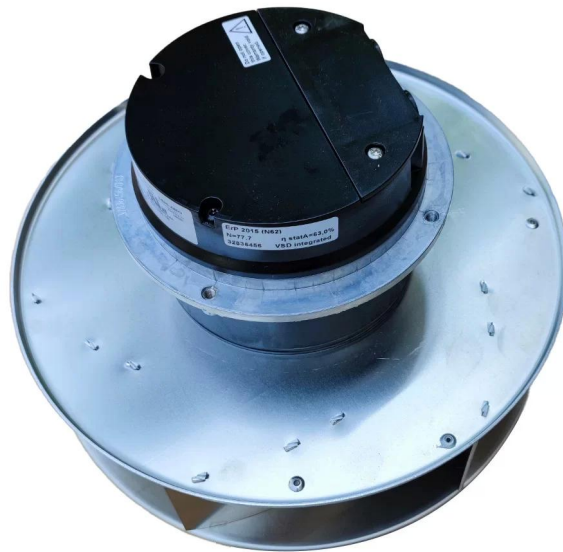
Rated Speed: 2350 RPM
Speed Control: Integrated EC controller (0-10V / PWM / MODBUS)
Max. Air Flow: 2030.6 CFM (3450.0 m³/h / 57.50 m³/min)
Max. Static Pressure: 2.81 inAq (700.0 Pa / 71.38 mmH₂O)
Working Air Flow: 3450.0 m³/h
Static Pressure Increase: 700.0 Pa
Efficiency Grade: ErP 2015 compliant (Nactual > 62)
Motor Type: ECblue (Electronic commutated external rotor motor)
Motor Protection: Integrated electronic motor protection
Insulation Class: THCL 155 (Class F)
Degree of Protection: IP55
Electrical Hookup: Lead wires or Terminal box
Connection Diagram: 1360-401 (ECblue standard)
Number of Blades: 7
Direction of Rotation: Clockwise (viewed toward suction side)
Impeller Material: High-performance composite (PA6 GF30)
Operation Mode: S1 (Continuous operation)
Sound Power Level: 74.0 dB(A) (at max speed)
Service Life (L10): 50,000 h (at 40 °C)
Operating Temperature: -20 - +60 °C
Standard Compliance: CE; EN 60335-1; ErP 2015; UL

Application

The ZIEHL-ABEGG RH31M-6ID.BD.2R EC centrifugal fan is the primary cooling component for high-efficiency precision air conditioning, clean room FFU systems, and telecommunication cooling modules requiring stepless speed control and high-pressure airflow in 200-277V environments.

Product Images





Scan for product details:

