

YWF4D-250S 4E 2E 2D 250B Weiguang Motor external rotor fan

SKU: 610478399729

Price: \$41.43

Categories: Refrigeration

Tags: Weiguang

Product Link:

<https://www.electspares.com/product/ywf4d-250s-4e-2e-2d-250b-weiguang-motor-external-rotor-fan/>

Product Description

Weiguang Motor YWF4D-250S 4E 2E 2D 250B external rotor fan condenser axial fan

YWF4D-250S [medium speed suction 380V]

YWF4D-250B [medium speed blower 380V]

YWF4E-250S [medium speed suction 220V]

YWF4E-250B [medium speed blower 220V]

YWF2E-250S [High speed suction 220V]

Summary of YWF Series axial fans

YwF series axial fans are external rotor fan motors. Those motors have characteristics of compact structure, convenient installation, energy conservation and high efficiency.

YwF series axial fan motors have two types, single phase asynchronous capacitor run fan motor and three phase asynchronous fan motor. They are widely used in condenser, evaporator and other refrigeration

equipments and ventilating cycle areas.

The insulation class of the YWF series axial fans is B or F.

Voltage: The voltage of the single phase fan is 220V/50Hz and the voltage of the three phase fan is 380V/50Hz. We can also supply other fan with different voltages and frequencies according to clients' requirement. The standard length of the electrical wire on the fan is 1.5m and we can also supply the fans with connection box for clients' choices.

The applicable ambient temperature of the fans used in condenser is from -30°C to 60°C.

The average service life of fans is over 30000 hours.

All fans got CE approval in Europe and CCC safety certificate in China. Before operating the fan, make sure the earth wire of the fan connected with the external grounding device.

Fan characteristic measured in full bell mouth without guard grill.

Hangzhou Weiguang Electronic Co., Ltd.(stock code: 002801) established in 1986 is a high technology professional manufacturer of fan motors in Zhejiang Province, with CE approval and ISO9001, ISO14001, OHSAS18001 certification.

We believe in the policy of continuous improvement and is backed by a strong Research and Development Department.

with a world class laboratory for performance, endurance, noise level, airflow and static pressure, what ensures the competitive quality.

With state of the art manufacturing facility, reliable quality and scientific management, we have won the trust of customers all over the world. Do contact us to find a solution for your individual application.

Additional Information

sort by color: YWF4D-250S [medium speed suction 380V], YWF4D-250B [medium speed blower 380V], YWF4E-250S [medium speed suction 220V], YWF4E-250B [medium speed blower 220V], YWF2E-250S [High speed suction 220V]

Product Images

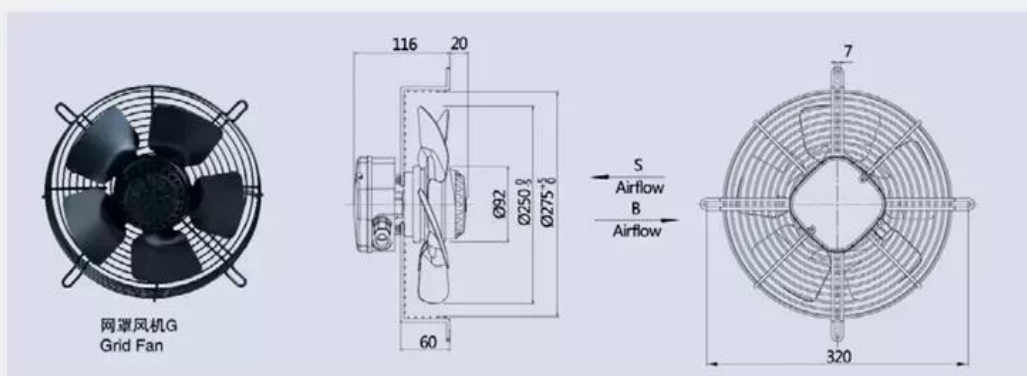
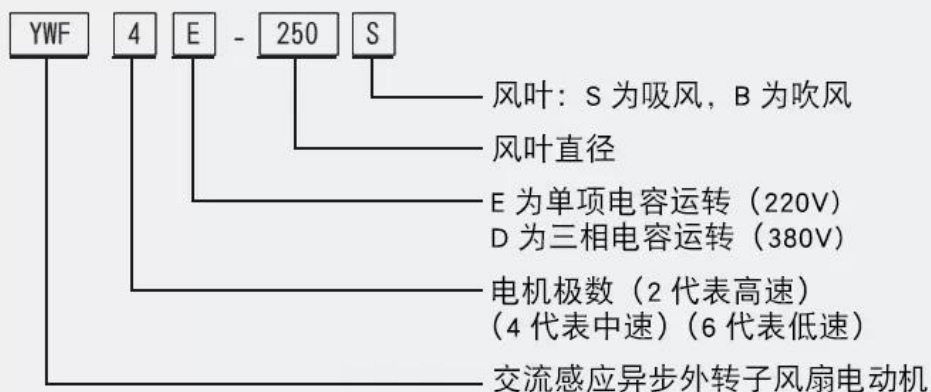




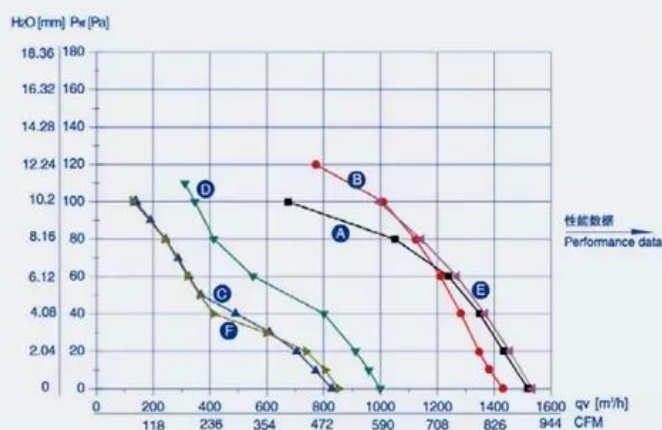


产品参数尺寸

型号齐全 · 库存充足



型号	额定电压	频率	额定电流	输入功率	额定转速	最大风量	电容	噪音	净重	曲线	备注
TYPE	VOLTAGE	FREQUENCY	CURRENT	INPUT	SPEED	AIR FLOW	CAPACITANCE	NOISE	NET WEIGHT	CURVE NO.	NOTE
	V	Hz	A	W	r/min	m³/h	μF	dBA	kg		
YWF2E-250S-92/25	220	50	0.42	90	2400	1450	3	60	2.5	(A)	
	120	60	0.95	120	2850	1430	10	60	2.5	(B)	
YWF4E-250S-92/25	220	50	0.23	50	1380	825	2	55	2.5	(C)	
	120	60	0.55	65	1600	995	8	55	2.5	(D)	
YWF2D-250S-92/25	380	50	0.19	95	2400	1534	/	60	2.5	(E)	
YWF4D-250S-92/25	380	50	0.18	55	1400	850	/	55	2.5	(F)	



CURVE NO.	曲线	PRESSURE 静压点 Pa	SPEED 转速 r/min	INPUT 功率 W	CURRENT 电流 A	AIR FLOW 风量 m³/h
(A)		20	2530	82	0.37	1430
		40	2470	86	0.39	1350
		60	2400	90	0.41	1240
(B)		20	3270	86	0.72	1345
		40	3220	92	0.76	1280
(C)		20	1450	48	0.23	700
		40	1435	49	0.24	490
(D)		20	1720	62	0.51	825
		40	1705	64	0.53	520
(E)		20	2565	85	0.18	1455
		40	2520	90	0.18	1365
		60	2450	97	0.19	1270
(F)		20	1455	58	0.17	740
		40	1440	59	0.17	410

Scan for product details:

