

Z40AA07A01 GPM10.0 Fasco 208-240V 1200W Burner Blower

SKU: Z40AA07A01 GPM10.0

Price: \$1,610.76

Categories: Fans

Tags: FASCO

Product Link:

<https://www.electspares.com/product/z40aa07a01-gpm10-0-fasco-208-240v-1200w-burner-blower/>

Product Description

The Fasco Z40AA07A01 GPM10.0 is a high-capacity 208-240V Centrifugal Blower specifically engineered for mission-critical forced draft applications in large-scale Premix Low-NOx Condensing Steam Generators and burner systems. Driven by a specialized high-speed motor with reinforced double ball bearings, this heavy-duty unit operates on a 208 - 240 VAC supply delivering a Max. Power Consumption of 1200 W and a Max. Current Draw of 5.2 A at a rated speed of 4900 RPM. This High-performance unit is optimized to overcome significant static pressure in condensing heat exchangers, providing a Max. Air Flow of 547.4 CFM (930.0 m³/h / 15.50 m³/min) and a Max. Static Pressure of 326.31 mmH₂O (3200.0 Pa / 12.85 inAq). Featuring intelligent speed regulation via PWM/0-10V control input, soft start, and locked-rotor protection, this 42-blade unit with die-cast aluminum construction ensures precise gas-air premixing and high operational reliability in intense thermal environments at the end.

Z40AA07A01 GPM10.0 Fan Parameters

Model Number: Z40AA07A01 GPM10.0

Manufacturer: Fasco

Type: Centrifugal Blower (Premix Burner Blower)

Impeller Size: 180 mm

Weight: 7.2 kg

Bearing Type: Ball bearing

Phase: 1~

Nominal Voltage: 230 VAC

Nominal Voltage Range: 208 - 240 VAC

Frequency: 50 / 60 Hz

Max. Current Draw: 5.2 A

Max. Power Consumption: 1200 W

Rated Speed: 4900 RPM

Max. Air Flow: 547.4 CFM (930.0 m³/h / 15.50 m³/min)

Max. Static Pressure: 326.31 mmH₂O (3200.0 Pa / 12.85 inAq)

Working Air Flow: 930.0 m³/h

Static Pressure Increase: 3200.0 Pa

Control Interface: PWM (0.1 - 6.0 kHz) / 0-10 VDC

Output Signal: Tach output (Speed signal)

Number of Blades: 42 (Forward curved)

Technical Features: Soft start; Motor current limitation; Locked-rotor protection; Over-temperature protected electronics

Motor Protection: Electronic motor protection

Touch Current (IEC 60990): ≤ 3.5 mA

Insulation Class: "B"

Degree of Protection: IP44

Protection Class: I (if protective earth is connected)

Impeller Material: Sheet steel / Aluminum

Housing Material: Die-cast aluminum

Direction of Rotation: Clockwise (viewed from motor side)

Installation Position: Any

Mode: S1

Ambient Temperature (Max.): 60 °C

Min. Operating Temperature: -20 °C

Standard Compliance: EN 60335-1; CE

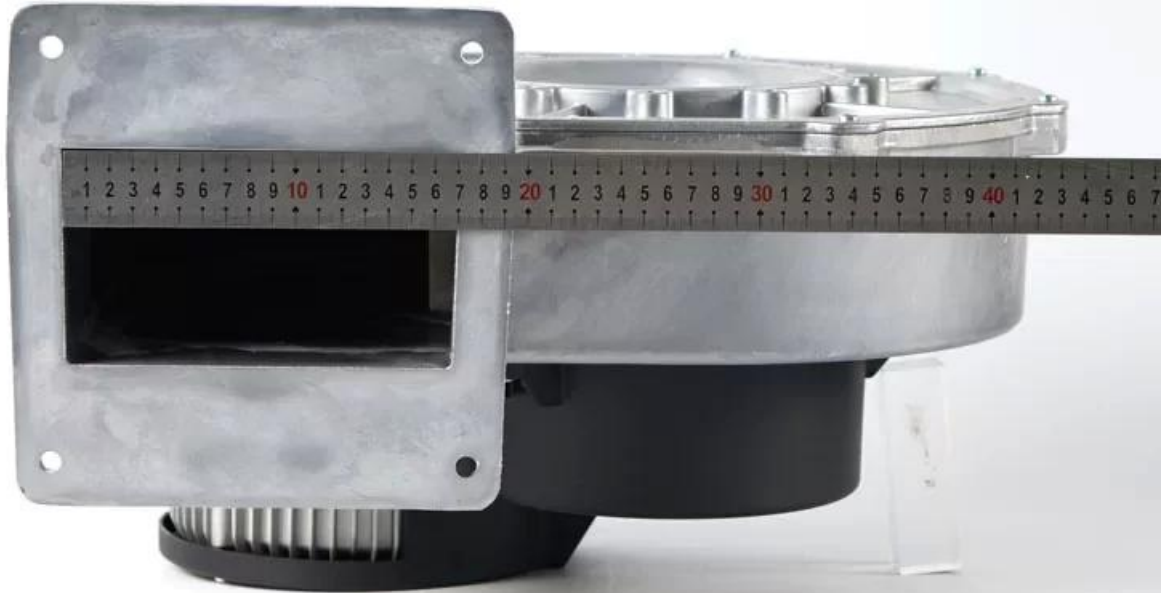
Approval: CCC; CE; UL

Application

The Fasco Z40AA07A01 GPM10.0 blower is the primary forced-draft component for large-scale premix low-NO_x condensing steam generators and burner systems requiring high-volume modulation and massive static pressure for efficient air-fuel mixing.

Product Images









Scan for product details:

